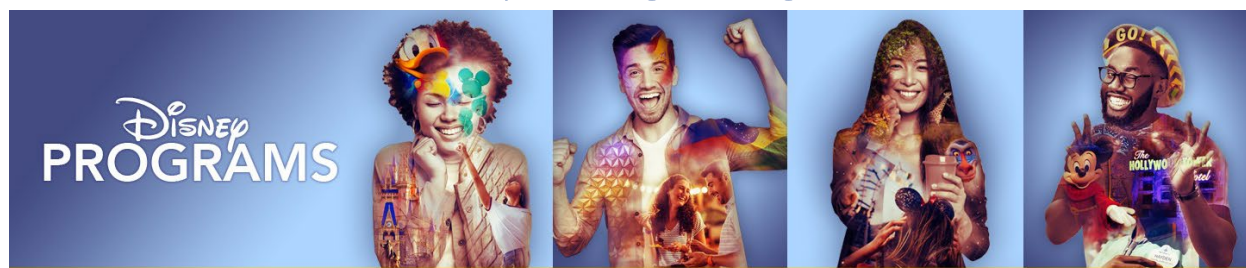


Disney College Program



Contents

Disney College Program	1
WHAT IS THE COLLEGE PROGRAM?.....	2
LIVING - Housing & Amenities While at	2
LEARNING.....	2
EARNING	2
DISNEY'S PARTICIPATION REQUIREMENTS.....	3
JCC'S PARTICIPATION REQUIREMENTS	3
APPLICATION PROCESS	3
PAY INFORMATION	4
FREQUENTLY ASKED QUESTIONS.....	4
WILL I HAVE A PERSONAL INTERVIEW?	4
IS THIS A PAID INTERNSHIP?	4
WILL I NEED A CAR?	5
WILL I RECEIVE CREDIT?	5
WILL I BE A FULL-TIME STUDENT WHILE IN THE COLLEGE INTERNSHIP PROGRAM?	5
WHAT IF I'M NOT ACCEPTED?.....	5
WHAT EXPENSES WILL I INCUR WHILE AT DISNEY?.....	5
WHAT ARE THE INCENTIVES OF PARTICIPATING IN THE PROGRAM?.....	5
WHAT ARE THE NEXT STEPS AFTER THE DISNEY COLLEGE PROGRAM?	6
CAN INTERNATIONAL STUDENTS PARTICIPATE IN THE PROGRAM?	6
HOW LONG DOES IT TAKE TO HEAR BACK AFTER I'VE APPLIED?	6
ARE THERE ANY COSTS ASSOCIATED WITH THE PROGRAM?	6
WHEN DOES THE SPRING SEMSTER BEGIN AND END?.....	6
CAN I RECEIVE CREDIT FOR THIS OPPORTUNITY?	6

WHAT IS THE COLLEGE PROGRAM?

The Disney College Program is a paid internship involving a unique [Living](#), [Learning](#), and [Earning](#) experience at either Disney World in Florida or Disneyland in California. You can potentially earn elective or internship credits for successful completion of the program. It is an exciting opportunity for students of all majors and backgrounds.

LIVING - Housing & Amenities

While at Disney, you will live at our brand-new, state-of-the-art living facilities which include upscale living spaces, a resort-style pool, a full-service fitness center, community-building common areas, and exceptional educational facilities. Housing costs range from \$202 to \$246* per week depending on the type of apartment a participant selects to live in during their program. [Learn more about DCP Housing Information.](#)

During your Disney Program, you'll have the opportunity to meet people from all over the world, and create long-lasting friendships. But don't just take our word for it.

Uniquely Disney experiences are a huge component of all of our programs. From character sightings to exclusive events, there's no shortage of magic to experience on your Disney Program!

LEARNING

With exceptional new educational facilities, you'll have the opportunity to experience courses that not only interest you, but also benefit you throughout your career journey.

Connect with experienced Disney professionals and learn more about their career journeys. You may be surprised how many started their career on one of the Disney Programs!

With so many unique experiences to be had, you will learn transferable skills within the classroom, at your workplace, and in your living experience to take with you on your next adventure.

EARNING

Participants may work indoors and outdoors at the theme parks, Disney Springs, water parks, and/or resorts. They will earn an hourly rate based on their specific role, but will be paid at least \$16 per hour. At the time of application, participants must be receptive to [all roles](#).

Participants could work the equivalent of a full-time schedule, so they must have full work availability, which includes working days, nights, weekends and holidays. Participants must also be flexible to work any time of day, including early morning or after midnight.

No matter the role offered, the Disney College Program provides a unique and diverse learning and working experience. Participants are encouraged to be flexible about the role offered to them. Each role truly gives each participant the opportunity to develop their communication and problem solving skills while working on their confidence and self-reliance.

DISNEY'S PARTICIPATION REQUIREMENTS

Below are Disney's Requirements to participate in the Disney College Internship Program:

1. Be at least 18 years of age at time of application.
2. Currently enrolled and taking classes at an accredited U.S. college, university, or higher education program OR have graduated from an accredited U.S. college, university or higher education program within 24 months of the application posting date.
3. Must have completed at least one semester at an accredited U.S. college, university or higher education program by the time of the program arrival.
4. Possess unrestricted U.S. work authorization for the duration of the program. Disney does not sponsor visas for the College Program.
5. Meet any individual school requirements (GPA, grade level, etc.), if applicable.
6. Former Disney College Program participants must wait four months after their last departure date before applying.

JCC'S PARTICIPATION REQUIREMENTS

1. You must be currently enrolled at JCC at least one semester as a full-time or part-time student for that semester. (The Disney College Program cannot serve as your first semester of college.)
2. Your cumulative GPA must be at least 2.0 by the time you leave for Florida or California. (a 1.999 is not acceptable).
3. In the semester prior to participation in the College Program, you must be registered for, and passing, at least two academic courses with a C or better grade.

APPLICATION PROCESS

Step 1: [Apply. Applying – Disney Programs Support](#)

Step 2: If selected to move forward, complete a web-based interview.

Step 3: If accepted into the program, accept offer within 7 days and pay your [program and housing fee](#). *You will get a reminder email 48 hours in advance of acceptance deadline.*

Step 4: Select your Dorm preference, approximately 2 months prior to arrival. *Housing costs are automatically deducted from paycheck.*

Step 5: Your “Role” will be sent 7 to 10 days prior to arrival.

Step 6: Arrive at Disney and enjoy your experience!

PAY INFORMATION

- **Pay Period**

The pay week spans Sunday through Saturday, with pay issued every Thursday, covering the hours worked the previous pay week.

- **Payroll Card or Direct Deposit**

After you begin working, you will receive your weekly pay on either a payroll card or through direct deposit. The payroll card is a MasterCard-branded card that works just like a debit card and can be used anywhere MasterCard is accepted. You will also receive information on enrolling in direct deposit upon arriving for the Program. You will need your bank's routing number and your account number to set up direct deposit.

- **Bring Extra Cash**

Due to our pay schedule, you may not receive your first check until 2 to 3 weeks after arrival and check-in.

You should bring money with you to cover your personal living expenses for your first few weeks. You will need money to purchase your food, the appropriate shoes for your work location's costume, etc. We suggest bringing between \$300 and \$400.

FREQUENTLY ASKED QUESTIONS

WILL I HAVE A PERSONAL INTERVIEW?

No. There are 2 steps in the application process.

1. Fill out the on-line application. If selected to move forward...
2. Complete a web-based interview.

IS THIS A PAID INTERNSHIP?

Yes, the Disney College Program is a paid internship. You will work the equivalent of a full-time schedule so you must have full work availability. This means that you must be available days, nights, weekends, and holidays. Days include early morning and evenings and may include after midnight hours. Generally, students work between 30 and 40 hours a week and may have opportunities to pick up additional hours. During peak times you may be required to work as many as 60 or more hours per week.

WILL I NEED A CAR?

No, you will not need a car while participating in the Disney College Program, but you may find it helpful to have your own car. Otherwise, you will have to depend upon your friends to transport you to the places you wish to go. Bus service provided by Disney is available from your Florida housing complex to work daily, and at least once a week to a grocery store and a shopping mall. There is no charge for this service. To bring a car is on a first-come, first request basis.

WILL I RECEIVE CREDIT?

That is up to you. To receive credit you are required to participate in an internship. The internship consists of taking one Disney course from among several that are offered and working at a location assigned by Disney. You will earn a grade for the course and a performance grade at your work location. Upon successful completion of the internship, you will receive a final grade and three or four (3 or 4) elective credits or if applicable internship course credit.

WILL I BE A FULL-TIME STUDENT WHILE IN THE COLLEGE INTERNSHIP PROGRAM?

If earning credit, you could be but it is not advisable. To be full-time means that you would be enrolled in courses totaling twelve (12) credit hours. This would involve your taking an additional six (9) credit hours while at Disney. In addition to the JCC internship requirements, some students in the past have taken additional courses. This, unfortunately, has not always worked out because of the demands of the internship responsibilities.

WHAT IF I'M NOT ACCEPTED?

If you are not accepted the first time you apply to Disney, you can apply again. A student in good standing may apply immediately when the next recruiting season begins.

WHAT EXPENSES WILL I INCUR WHILE AT DISNEY?

Starting from the time you leave home, you will be responsible for all expenses that you incur (transportation to Disney, housing, food, entertainment, etc.). Housing can be taken out of your weekly paycheck. You will be paid at least minimum wage at your work site. While the pay is modest, you will be given "perks" such as free admission into the parks, discounts on food and merchandise you buy while in the parks. Because of your Disney status, some Orlando merchants will offer discounts to you as well. In addition, your family is entitled to a discount on their hotel room when visiting you.

WHAT ARE THE INCENTIVES OF PARTICIPATING IN THE PROGRAM?

- Disney on resume, looks great to employers
- Theme parks for free
- Discounts on merch and food and beverage

WHAT ARE THE NEXT STEPS AFTER THE DISNEY COLLEGE PROGRAM?

- Finish education
- Professional internships – look at college program alum first
- Full and part time opportunities

CAN INTERNATIONAL STUDENTS PARTICIPATE IN THE PROGRAM?

- Yes, proper documentation needs to be provided. [What documents are required for international students studying in the U.S.? – Disney Programs Support](#)

HOW LONG DOES IT TAKE TO HEAR BACK AFTER I'VE APPLIED?

- 2 weeks at the earliest and at the latest by early November for a January or February arrival.

ARE THERE ANY COSTS ASSOCIATED WITH THE PROGRAM?

- 431.00 will be due when a participant accepts their invitation.

WHEN DOES THE SPRING SEMESTER BEGIN AND END?

- Departure will be in January or February, and you will not return before end of May but could be as late as August, prior to the start of the Fall semester.

CAN I RECEIVE CREDIT FOR THIS OPPORTUNITY?

- Many times yes. It may be able to fill the internship if applicable to your degree program. Or the Coordinator of Student Employment & Internships will work with your faculty advisor to petition for liberal art or free elective credit if available in your curriculum for your degree. [How can I get college credit for my Disney Program? – Disney Programs Support](#)